

RFM

THE MIDLANDS MART

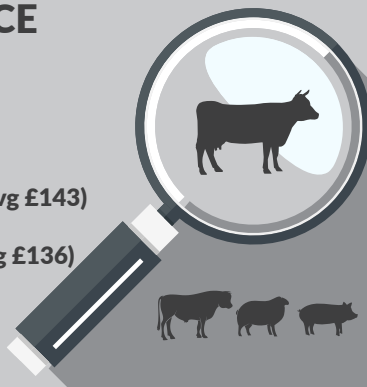
— RUGBYFARMERSMART.COM —

The Charolais Pavilion, Avenue M, Stoneleigh Park,
Kenilworth, Warwickshire CV8 2RG
02476 697731 | www.rugbyfarmersmart.com | 43/139/8013
Office hours: Monday to Friday - 9.00am - 5.00pm
Opening Time: Gates open at 5.30am until further notice

MARKET REPORT FOR MONDAY 17TH APRIL 2023

MARKET AT A GLANCE

Prime Steers to 340p/kg & £2250
Prime Heifers to 358p/kg & £2412
Prime Bulls to 321p/kg & £2778
Cows to 279p/kg & £2293
Prime Hogg SQQ 327p/kg (3351 Avg £143)
Prime Hogs to 451p/kg & £205
Prime Lamb SQQ 378p/kg (115 Avg £136)
Ewes to £300 (1636 Avg £130)
Calves to £450 (81)



THURSDAY 20 TH APRIL
SALE OF STORE CATTLE,

Catalogues & Entry Forms available by post, email or on the website
www.rugbyfarmersmart.com | admin@rugbyfarmersmart.com

CATTLE: 185 FORWARD



97 Prime Cattle forward consisting of 27 Young Bullocks, 34 Prime Heifers, 17 Young Bulls and 19 OTM Cattle.

All cattle across the board sold to a fantastic trade, from the top end to the lesser quality. A definite shortage of mid range cattle.

Top of the day was Henry Tustian, Newlands with both the Heifers and Steers. Heifers topped at 358ppk, and bullocks to 340ppk.

Nigel Hollick, Honesberrie Farms topped with homebred Bulls to 321ppk.

GR Fountaine, topped the Bulls at £2777.

G Hutsby & Sons topped the Steers at £2249.50.

H&J East topped the Heifers at £2411.64 with a fantastic blue.

Cull Cows a grand show, with Frank Page selling to £2293 or 279ppk.

Auctioneer: Emma Coupland (07808 271218)

Len Eadon 1999-2022 Tribute page

<https://leneadon.muchloved.com/?fbclid=IwAR1QM9qsvxqscmyehDUwuJvjrB4KICliDqyezWbDYBEAsDaB164bZn50g4>

****FAT CATTLE TIMINGS****
COWS 8:30AM
PRIME CATTLE 9AM

STEERS & BULLS

Top prices per Head				FA
Limousin (Bull)	868kg	£2777	G R Fountaine & Son	Y
Limousin (Bull)	752kg	£2413	Honesberie Farms	Y
Angus (Bull)	972kg	£2391	R F Leach	Y
Holstein (Bull)	948kg	£2332	R F Leach	Y
Limousin x	818kg	£2249	G Hutsby & Sons	Y

Top prices per Kilo				
British Blue	564kg	340ppk	J & H Tustian	Y
Blonde	662kg	334ppk	G R Fountaine & Son	Y
British Blue	566kg	334ppk	J & H Tustian	
Limousin x	580kg	332ppk	Page Bros	Y
Limousin	634kg	325ppk	N A S Johnson	Y

HEIFERS

Top prices per head				FA
Parthenai	756Kg	£2411	H & J East	Y
British Blue	750kg	£2287	H & J East	Y
Limousin x	722kg	£2151	F K Baxter	Y
Limousin	678kg	£2128	F K Baxter	Y
Limousin	712kg	£2121	F K Baxter	Y
Top prices per kilo				
British Blue	506kg	358ppk	J & H Tustian	Y
British Blue	598kg	351ppk	C W Thomas	Y
British Blue	504kg	348ppk	J & H Tustian	Y
Limousin x	564kg	345ppk	C W Thomas	Y
Limousin	610kg	333ppk	N A S Johnson	Y

THE PASSING OF JOHN JEYES

John Jeyes passed peacefully at home on 22nd March, aged 92
 His funeral will take place on Wednesday 26th April, 1.30pm at St Peter's Church,
 Church Lawford near Rugby

COWS

Top prices per head Cows				FA
Limousin x	822kg	£2293	Page Bros	Y
Limousin x	790kg	£2133	Page Bros	Y
Limousin	826kg	£1883	Honesberie Farms	Y
Limousin	770kg	£1817	Honesberie Farms	Y
Top prices per kilo				
Limousin x	822kg	279ppk	Page Bros	Y
Limousin x	790kg	270ppk	Page Bros	Y
Limousin x	676kg	238ppk	S W Mason	Y

SHEEP: 5257 FORWARD
PRIME HOGGS: 3351 FORWARD
SQQ327 P/KG AVG £143

”

Hoggs; (A massive Thank You to the Wonderful Staff, Hauliers and Helpers for their assistance in processing so much Stock not booked in)
 A bumper crop of Hoggs coming to meet the trade with the local Feeders out and about with meat Hoggs on show. A full ring of Buyers appreciating quality throughout to return an SQQ of 327p/kg and an all in avg of £143!!! Top today saw best Export Hoggs in high demand selling to 451p/kg for Pure Beltex Hillside Farm. Beltex from V J Roots 402p/kg and City Hoggs to 400p/kg for L Kerby. M & C Morris 397p/kg at 35k equal with Messrs Guest. Export quality hoggs generally 330 plus with 44-45.5kg 310p/kg plus. Heavies a real trade for meat topping at 382p/kg at 46kg for V J Roots who also sold the same at 382p/kg and Alwyn Williams 46.5kg at 369p/kg.
 Export Hoggs really tallying up today to see a top of £194 for Hillside Farm at 43kg whilst K Crabtree 44.5kg £169.50 and Messrs Roots 41kg to £165 with R Woodward 43kg to £163.50. Heavies passing the Magical £200 mark topping at £205 and £200 for J & R Lowe down from Rugby also selling at £196 for 63kg. A Mitchell 53kg £195. Trade all around and three new Accounts from the North opened today, an indictment of the need for the Ramadan Party at the weeks end. Next week likely a slow in demand but perhaps trade likely favourable later in the Month.

Auctioneer: Thomas Wrench

PRIME HOGGS SQQ 328p/kg

Per Kilo **under 45kg**

Beltex	43.00kg	451ppk	Hillside
X Breed	41.00kg	402ppk	V J Roots
X Breed	29.50kg	400ppk	L Kerby
X Breed	35.00kg	397ppk	M & C Morris
X Breed	36.50kg	397ppk	OJ & MJ Guest

Per HEAD

Beltex	43.00kg	£194.00	Hillside
X Breed	44.50kg	£169..50	K Crabtree
X Breed	41.00kg	£165.00	V J Roots
X Breed	43.00kg	£163..50	R Woodward
X Breed	43.00kg	£159.00	N Wallington

Per Kilo **over 45kg**

X Breed	46.50kg	392ppk	V J Roots
X Breed	46.00kg	382ppk	V J Roots
Texel	46.50kg	369ppk	A Williams
Texel	53.00kg	368ppk	A Mitchell
X Breed	48.00kg	367ppk	GR Fountaine & Son

Per HEAD

X Breed	64.50kg	£205.00	J & R :Lowe
X Breed	63.50kg	£200.00	J & R Lowe
X Breed	63.50kg	£196.00	J & R Lowe
Texel	53.00kg	£195.00	A Mitchell

SPRING LAMBS: 115 FORWARD SQQ 378 P/KG AVG £136

”

A very varied offering with a number of poor Lambs forward. Better shaped Lambs today saw real shape to 443p/kg for Doody Livestock with Beltex whilst RDG Taylor sold fresh Lambs to 423p/kg at 40kg and 43kg 414p/kg. Meat the Key but still a rather Niche trade at the moment. Top £180 for RDG Taylor, Banbury.

Auctioneer: Thomas Wrench

CULL EWES: 1636 FORWARD



A good yarding of genuine Farmers Ewes not dealers on the buy back system saw an avg of £130. Best Ewes in big demand for the last selling day before the Ramadan Festival Party topping at £300 for Beltex x Ewes from V J Roots with a pen of 5 Charollais from J & R Lowe to £262 with Texels from L Dallow to £250 and £242 from P Cobley. Charolais from Messrs Tombs & Son. Boulton Bros sold Texel Rams to £220 equal with Hillside and Charolais £220 for R Poulson. Any shape today £180 plus depending on weight. Suffolks to £190 for Messrs Baxter & Smith and Lowe and £184 for Padray Farms. Suffolks generally £155 plus if meated. Mules to £150 for P Bates and £148 for Redfern. Mules generally £120 to £135. Again trade likely to slow next week

Auctioneer: Thomas Wrench

Beltex	£300	V J Roots	X Breed	£242	P K Cobley
Char	£262	J & R Lowe	Texel	£230	L Dallow
Texel	£250	L Dallow	Char	£223	F J Tombs & Son

STORE SHEEP: FORWARD



Store Lambs : 154 Forward

Tremendous trade today from start to finish, most lambs well over £90 and topping at £132

Good run of stores from DG Coombes £90 to £112.50

Next sale 24th April

Auctioneer Tim Webster

Sunday lairage is now open from 9am-3:00pm
Gates close 3:00pm **STRICTLY.**

FOR SALE

Collie Pups
Dogs & Bitches Available
Ready Mid May
Call: Norman 07801 446700

FOR SALE

Collie Pups for sale
Well Bred Working Parents
Father International Trial Winner
Ready Early March 07966505848



CALVES

80 Calves Forward

What a tradeplenty of new buyers present today for the latest StowAg Show and Sale.

George Scrivens was today's Judge and picked Peter Hemmings British Blue Bull , which made £450 and was bought by the Judge, each will receive £25 vouchers to spend with StowAg

Other good runs from Whetstone Pastures topping at £375 for a British Blue Heifer and Hayden James selling British Blue Bulls £400 & £425

British Blue Bulls £240 to £450

British Blue Hfrs £170 to £375

Limousin Bulls. to £395

Limousin Hfrs. to £210

Angus Bulls. £75 to £285

Angus Hfrs. £115 to £180

Wagyu Bull. to £200

Sussex Bulls. £80 to £97

Longhorn Bull. to £42

Next sale 1st May

Auctioneer : Tim Webster



ewe & LAMB SALE

Ewe & Lambs : 125 Forward

Much interest in sale with good runs of sheep sold and a good crowd of buyers

W Bartlett sold Beltex Double Theaves and strong single lambs at foot £122 to £132

Will Gaydon sold Texel Ewe Lambs and single lambs £110 to £112

Mel Hoyle sold Suffolk Double Theaves and Lambs to £102

Andrew Geary sold North Country Mule Ewe Lambs £92 to £98

We are holding another sale in May

Auctioneer : Tim Webster



Farm insurance, the way it should be

We're a family-run business and pride ourselves on forging long term relationships with our farming and agricultural clients. Covering the Midlands, South West and South East, we deliver an extensive range of farm, agri business and equine policies tailored to you.

Farm & Equine **01865 290915**

General **01865 844998**

 Follow us **@County_Farm**

www.county-insurance.co.uk/farms



Independent Insurance Brokers County Insurance Services Limited. Address and Registered Office: County House, Glyme Court, Langford Lane, Kidlington, Oxon OX5 1LQ. Authorised and regulated by the Financial Conduct Authority (FCA) (FRN: 597267). Company registered in England No. 08411634

STORE CATTLE

STORE RING RECORD £2010 Messrs Gilbert, Arley

Another good Show for the April Fair with annual Judging of the best Beast completed by the Expert Eye of R Mallison, Lubbenham. Again competed for by the Frank Riley Perpetual Rose Bowl.

A super Show this year with the results as follows;

Champion; D M Leedham, Leicester – 12 month Limousin Steer selling to £1400 to R Mallison

Steers;

1st D Leedham, 12m £1400
2nd RJB Farms, Cornwall 10m £1200
3rd JB,HM & JM Gilbert, 22m £1910

Heifers;

RJB Farms, Cornwall 12m £1400
D Leedham, 8m £850
Heart of England, 13m £1040

Starting with the Bulls a grand Simmental 8m Bull from Greyhound Estates made £1110 showing a great example of why to view their Breeding Bulls. 10m Simmentals from A Thompson £1050 older South Devon Bulls saw 18m to £1200.

Young grazing Cattle saw the first signs of last Summers drought coming home to Roost. A few Calves having been short of Milk last summer. Trade responding to the same although making the better Cattle more appreciated. D Leedham the 2023 Champion saw a grand Sale topping at £1400 for the Champion then selling Blues 14m Steers to £1290 and £1200. A wonderful run of Cattle from Heart of England saw £1635 for 15 month Steers. Younger Limousin Steers 14m saw £1420 and £1380. Heifers to £1310 15 months and others yearlings to £1100. Simmental Steers yearling from W R Eales & Son saw £1130 and Sisters £835. Jenson Pallet sold the best quality show we have seen with Blondes at 11 months to £1070 and thicker sorts £1230. Sistes to £960. R J Brendon turning from Cattle supplier to Showman today sending quality up from the South West to sell Limousin Heifers 12 months at £1410 and 10 month Blue Steers £1200. Amy Wright well looked after when selling Angus Steers to £1165 12 months. P Milner a return Customer saw £1155 and £1135 for 12 -14m Limousin Steers with Sisters £1040 and £1015. Annual consignment from S & J Farming, Brackley seeing yearling Charolais to £1220 and 11 months £1140 others £1160 and £1125. With Charolais Heifers to £1180 and £1040. RJ & P Milner in next to see £1160 13months. S Stevenson, Market Bosworth next saw Blues to £1095 at 14 months. RS Beaty have a great following and saw 15 -16m Simmental Steers at £1320, £1305,£1285. Younger Sorts saw 14month Steers £1320 with others £1180.

Robinson Bros, Market Harbrough sold outwintered Angus Steers £1220 17 months with Sisters £1275. C H Evans Blue x Simmentals saw Heifers 19 months to £1670, £1455 and £1300. Strong Herefords again well chased from D P Jones selling 20 months at £1265 and £1220 for Steers. Amy Wright again then selling Simmental Heifers at 20 months to £1350 and Blues at £1200. Last years Champion then in showing that quality always shines through selling a new record at £2010 at 21months for Limousin Steers with brothers £1910 and £1900. Messrs RJ & P Milner then back to the ring to sell Simmental Steers 20 months to £1490, £1390 and £1340 Sisters to the same £1300. Buyers always flock for E J Taylor & Son aged and grown Charolais Cattle. Setting off at £1810 for 23m Steers with others £1740,£1730,£1710. Sisters 16-18m £1640 and £1590. Younger sorts 14 months saw £1450 and £1335, £1295. L Bicknell then saw Hereford Heifers 20 month £1100. Last man through the ring E C Parker & Son saw £1800 18 – 19m with others £1505 and a Sister £1550.

We sell every Thursday this month when hopefully the weather will suit buyers better.

Auctioneer Thomas Wrench



From animal feed to fencing **WE'VE GOT YOU COVERED**

Based in the heart of the Cotswolds, StowAg is a family run business which has been trading since 1969. We stock over 15,000 products for farmers, agricultural contractors, estate managers and landowners.

We deliver for FREE within 50-miles of our store.



Proudly sponsoring Rugby Farmers Mart 2022

01451 830 400 | stowag.com | sales@stowag.com
StowAg, Moreton Road, Longborough, Glos. GL56 0QJ

LAND FOR SALE

howkinsandharrison.co.uk

HOWKINS & HARRISON

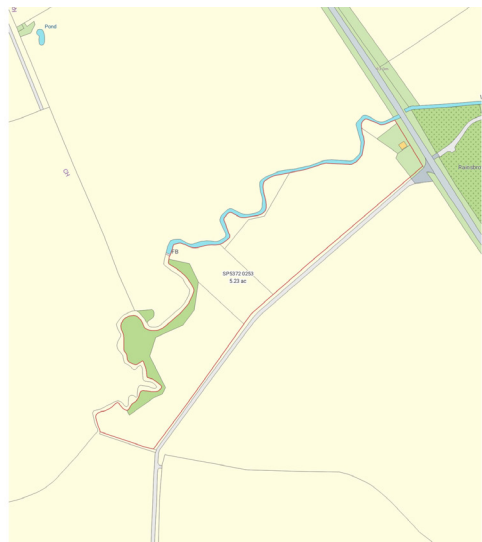
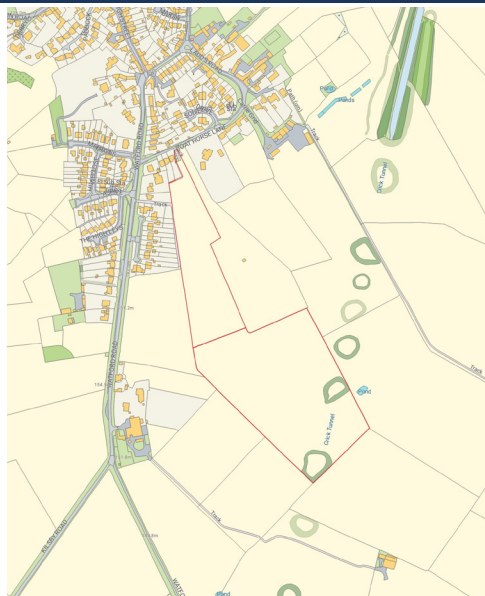


Investment opportunity at Watford Road, Crick, Northamptonshire NN6 7TT

An attractive block of undulating pasture land in a strategic location with long term development potential, situated to the south of Crick, just off Watford Road, offered freehold, subject to tenancy.

Extending to approximately 20.99 acres (8.41ha).

Approximately 20.99 acres of pasture land, presented as two adjoining fields bordered by mature hedge and tree boundaries with stock fencing. The land can be accessed via a gated entrance off Boat Horse Lane.



Land at Barby Lane, Rugby CV23 8UX FOR SALE BY ONLINE AUCTION

An attractive parcel of pasture land to the south of Rugby with road frontage, timber frame shed and wooden pole lean-to suitable for agricultural and equestrian use.

The situation of the land is shown on the attached location plan. Approximately 5.23 acres of pasture land with road-frontage onto Barby Lane, presented as three stock-fenced enclosures with mature hedge and tree boundaries. The land extends to approximately 5.23 acres, being relatively level with visible signs of ridge and furrow.

ENQUIRIES

Henry Martin or Peter Osborne | Howkins & Harrison 7-11 Albert Street, Rugby CV21 2RX | rugrural@howkinsandharrison.co.uk | 01788 564680



APRIL 20th & 27th

MAY 11th & 25th

JUNE 8th

JULY 13th

AUGUST 10th

SEPTEMBER 14th

OCTOBER 12th & 19th

NOVEMBER 2nd, 9th & 23rd

DECEMBER 14th

RFM
THE MIDLANDS MART
RUGBYFARMERSMART.COM

 + *STORE LAMBS*

CONTACT THE OFFICE TO BOOK IN YOUR ENTRIES

02476 697731 OR

ADMIN@RUGBYFARMERSMART.COM

FARMS FOR SALE

howkinsandharrison.co.uk

HOWKINS & HARRISON

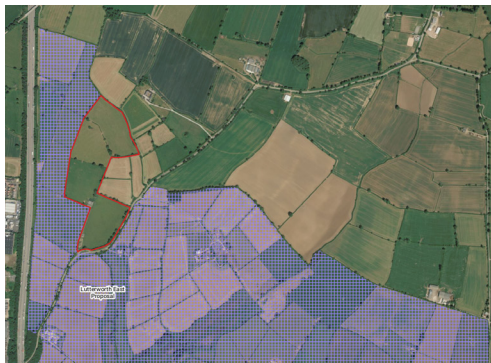


The Bungalow, Gilmorton Road, Lutterworth, Leicestershire LE17 4LE

A smallholding with long term development potential in a convenient location on the edge of the Lutterworth East proposal. Extending in all to approximately 37 acres of pasture. The property comprises a two-bedroom single storey dwelling with an attached single bay garage together with gardens which wrap around the property. Located within the centre of land are two steel frame agricultural buildings.

Features

- 2 Bedroom Bungalow for modernisation
- Range of Farm Buildings
- 37 acres
- Long term development potential



Navigation Farm, Willoughby, Rugby, Warwickshire CV23 8AG

Navigation Farm is a ring fenced residential, pasture and arable farm with general purpose buildings suitable for a variety of alternative uses (subject to planning). The farm stands in an elevated position but is conveniently located close to midlands conurbations, motorway and transport links. The farm extends to about 97 acres.

Features

- 4 Bedroom Farmhouse (2,596 sq ft)
- 17,180 sq ft of General Purpose & Livestock Buildings
- 9714 acres of productive Arable & Pasture land
- Elevated position with far reaching views



ENQUIRIES

Tim Howard or Charles Morton | Howkins & Harrison 7-11 Albert Street, Rugby CV21 2RX | rugrural@howkinsandharrison.co.uk | 01788 564680

WE COVER SMALL FARMS, LARGE FARMS AND EVERYTHING IN BETWEEN



From sheep farmers to arable farmers.
Flower growers to poultry farmers.

NFU Mutual is proud to insure over 75% of UK farms with our Farm Select insurance. But we want more farms to benefit from great cover and local service. NFU Mutual has introduced Farm Essentials insurance – designed to meet the needs of smaller farms.

As your local agency, we are close by and can provide expert advice and hands-on support when you need it.

Call **Coventry Office** on **02476 444519**

NFU Mutual, 6 Eastwood Business Village,
Harry Weston Road, Binley Business Park,
Coventry, CV3 2UB



NFU Mutual
FARM INSURANCE

50

Years of the
Rugby Primestock Society

DATE FOR YOUR DIARY
FRIDAY 1ST DECEMBER 2023, STONELEIGH PARK

T.A.R HIRE

FOR HIRE:

- 10 & 14 TON REAR MUCK SPREADERS
- 12 TON TRAILERS WITH SILAGE SIDES
- ROAD SWEEPER
- FLAT TRAILERS
- GRASS TOPPERS
- CONTRACT MUCK SPREADING SERVICES

CONTACT:

DAVENTRY (ROB) - 07801791212

HINCKLEY (ALAN) - 07802951179

FINISHING CATTLE? GROWING CATTLE? FEEDING SHEEP?

BERRYSTOCK
FEEDS



Do you want **HIGH PERFORMANCE, COST EFFECTIVE, FULLY ASSURED and COMPLETE FEEDS?** Then contact **BERRYSTOCK FEEDS:**

Tel: 01788 890320 E-Mail: john@berryfieldsfarm.co.uk Web: www.berrystockfeeds.co.uk

BERRYFIELDS FARM, DAVENTRY, NN11 8NP



THE MIDLANDS MART

RUGBYFARMERSMART.COM

FORTHCOMING SALES

THURSDAY 20TH APRIL

SALE OF STORE CATTLE

**Vendors who are wishing to sell stock
please feel free to contact:**

Tom Wrench - 07774 723758 Market Manager & Auctioneer

Tim Webster- 07437 101163 Auctioneer & Fieldsman

Emma Coupland- 07808 271218 Fat Cattle Auctioneer

Charlie Betteridge- 07760266701 Fieldsman

Nathan Shaw-07460120293 Yard Manager

who will gladly make

A FREE ON FARM VISIT & VALUATION



Follow us on social media:

Facebook & Twitter - @RFMMidlandsMart

Instagram - rugbyfarmersmartLtd